

DIAPHRAGM PUMP

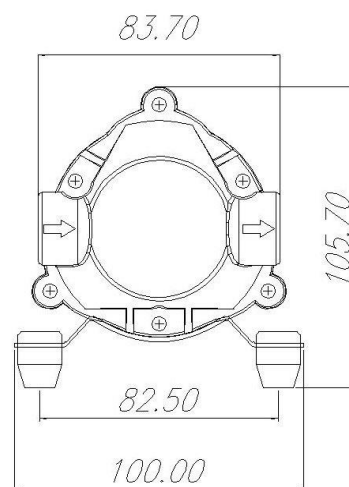
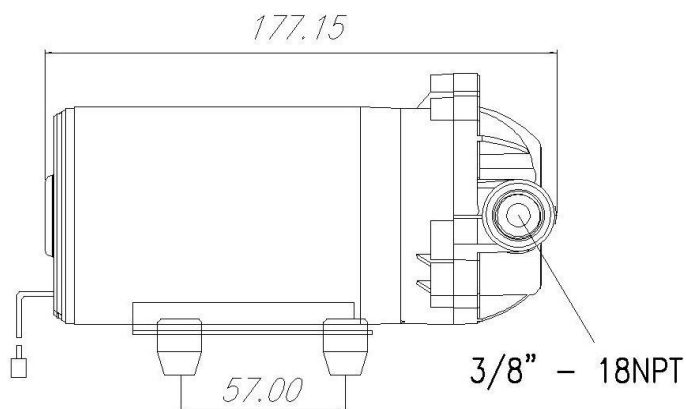
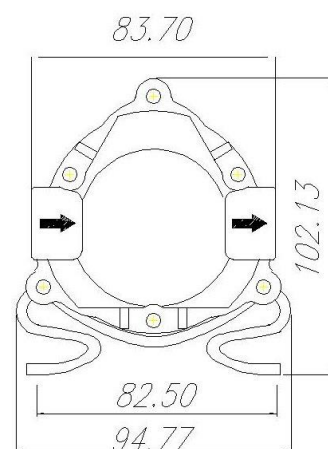
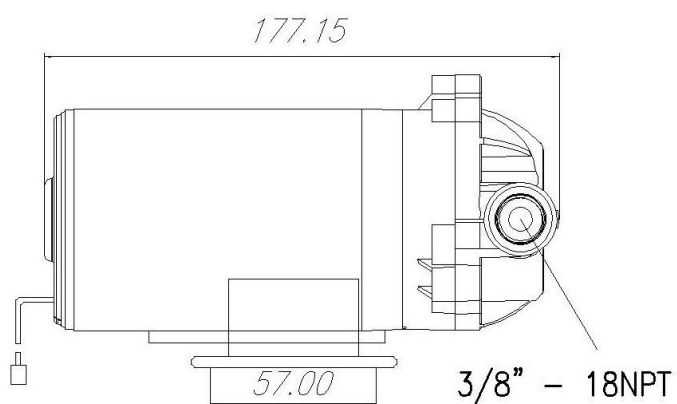
8050

SPECIFICATIONS

- MODEL NUMBER: 8050
- PUMP DESIGN: positive displacement three chamber diaphragm pump
- MOTOR: permanent magnet
- VOLTAGE: 24VDC
- PRESSURE SWITCH: None
- LIQUID TEMPERATURE: 60 ° C (140 ° F) max.
- SELF-PRIME: Yes
- RUNS DRY WITHOUT DAMAGE
- PORTS: 3/8"-18 NPT female
- NET WEIGHT: 1.65 kg
- DUTY CYCLE: continuous
- TYPICAL APPLICATIONS: R.O. booster pump and water delivery
- BYPASS: 112psi
- CERTIFICATION: CE

DIAPHRAGM PUMP

8050



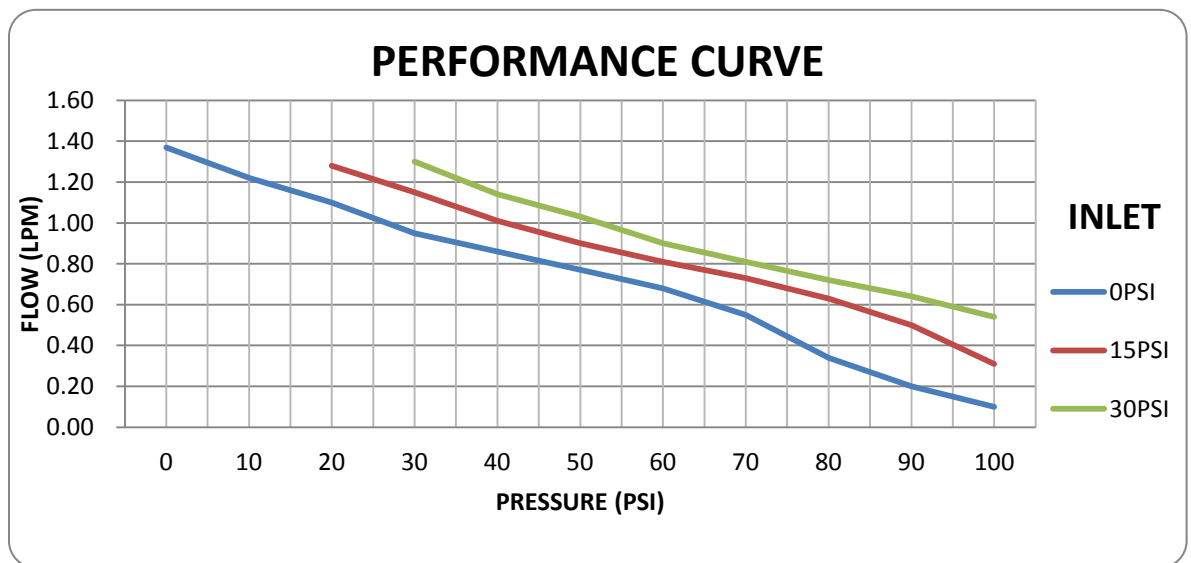
(UNIT : mm)

DIMENSIONS

DIAPHRAGM PUMP

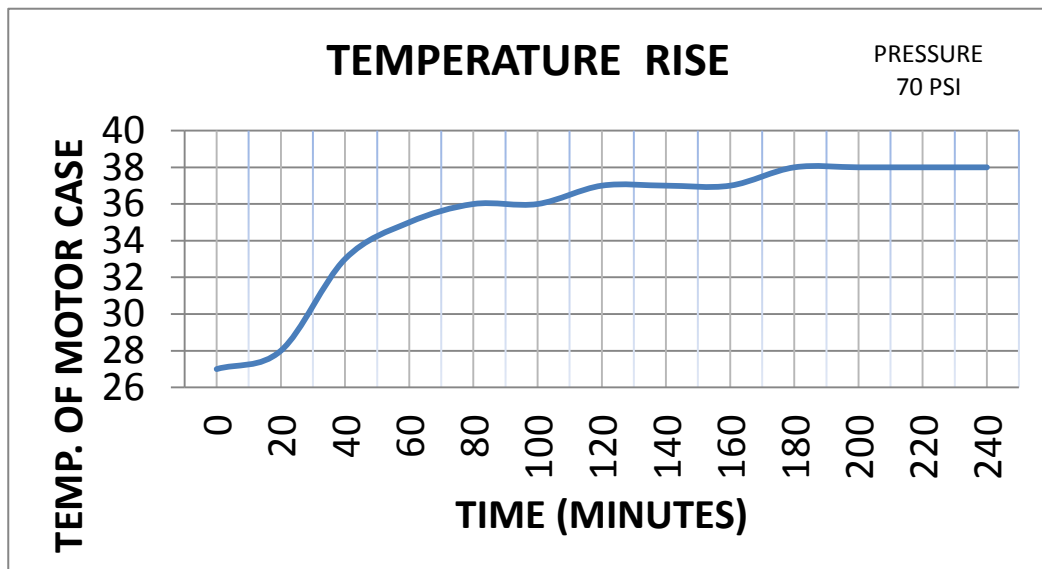
8050

INLET	0 psi (Self-priming)		15 psi		30 psi	
PRESSURE (PSI)	FLOW (LPM)	CURRENT (A)	FLOW (LPM)	CURRENT (A)	FLOW (LPM)	CURRENT (A)
Open flow	1.37	0.17	=	=	=	=
10	1.22	0.23	=	=	=	=
20	1.10	0.31	1.28	0.22	=	=
30	0.95	0.38	1.15	0.29	1.30	0.22
40	0.86	0.44	1.01	0.35	1.14	0.29
50	0.77	0.50	0.90	0.42	1.03	0.36
60	0.68	0.55	0.81	0.48	0.90	0.42
70	0.55	0.61	0.73	0.54	0.81	0.49
80	0.34	0.65	0.63	0.60	0.72	0.55
90	0.22	0.52	0.50	0.65	0.64	0.60
100	BY PASS	0.76	0.31	0.70	0.54	0.67
115	=	=	BY PASS	0.81	=	=
135	=	=	=	=	BY PASS	0.86
ALL DATA BASED ON TESTING WITH WATER						
POWER SUPPLY : 24VDC						

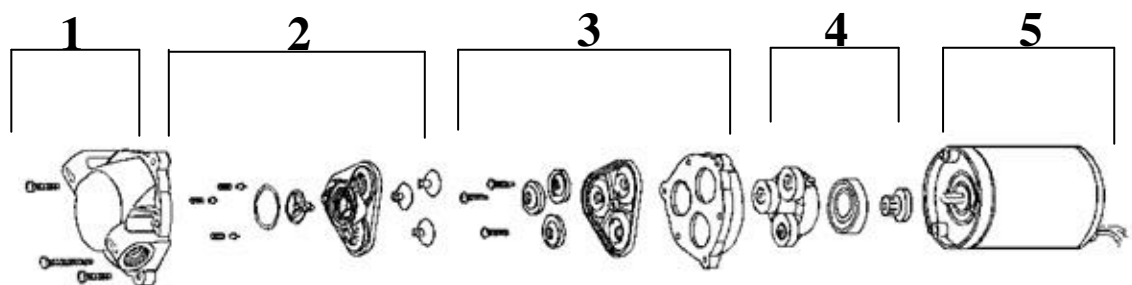


DIAPHRAGM PUMP

8050



THIS TEST IS BASED ON RUNNING CONTINUOUSLY WITH AN AMBIENT TEMPERATURE OF 26° C IN STILL AIR



1	UPPER HOUSING
2	BYPASS VALVE AND DISCHARGE VALVE ASSEMBLY
3	DIAPHRAGM AND PISTON COMPONENTS
4	DRIVE ASSEMBLY
5	MOTOR ASSEMBLY (LESS BASE PLATE)